



the **TREE LINE**

the official monthly
publication of the

BONSAI SOCIETY of PORTLAND

Upcoming Events

December
2023

Monthly Meetings:

December 16 2-4 pm BSOP Holiday Party, Milwaukie Center

January 7, 9:00-1:00 Mentorship 101 class, Oregon Grape Room, Milwaukie Center

January 7, 1:30-3:30 Mentorship 102 Lab, Oregon Grape Room, Milwaukie Center

January 23 6:00-9:00 BSOP Monthly Meeting, Daisaku Nomoto Presents

February 11 9:00-1:00 Mentorship 101 class, Oregon Grape Room, Milwaukie Center

February 11 1:30-3:30 Mentorship 102 Lab, Oregon Grape Room, Milwaukie Center

February 23 6:00-9:00 BSOP Monthly Meeting, Ryan Neil Presents

Greetings BSOP,

I hope everyone is having a nice transition from fall to winter. Here at RAKUYŌ I've really enjoyed seeing my deciduous collection at their peak in silhouette again. This month we have our holiday party and auction, and I can't wait to spread the holiday cheer with the BSOP family. It's looking like this will be one of our largest holiday parties yet, so thanks everyone for signing up!

As we wrap up 2023, I'd like to express my gratitude for those who give back to the club, BSOP wouldn't exist without a large passionate team of volunteers. Your BSOP board has been working hard on creating an exciting 2024, and many thanks to Ben (our programming VP) for the excellent lineup he has in store for us next year. Patrice (our membership VP) had the excellent idea to start a BSOP scholarship and we'll be announcing details on that in the coming months. Brandon (our club treasurer) doesn't just manage the club finances, but is a passionate mentor in our mentorship program and is always the first to help out where needed. Jeffrey (our club secretary) not only keeps diligent minutes during our meetings but puts tremendous effort into our club Facebook page.

But it's not just our board, we have so many committee chairs and countless volunteers that keep BSOP afloat that really make this club special. Thanks to everyone who lends a hand, our wonderful club wouldn't exist without you all!

Cheers, *Andrew Robson* BSOP President

BSOP December Programs Update

Recap of November Program and 2023 Highlights

As we approach the end of the year, let's reflect on the incredible bonsai journey we've shared. November's program featuring Michael Hagedorn was truly a highlight, bridging tradition and innovative design. If you don't know Michael, here's a brief bio with some key points:

Michael Hagedorn:

- Apprenticed with bonsai master Shinji Suzuki in Obuse, Japan from 2003-2006.
- Author of the apprentice memoir 'Post-Dated: The Schooling of an Irreverent Bonsai Monk' and the educational book 'Bonsai Heresy: 56 Myths Exposed Using Science & Tradition.'
- Formerly a potter, Michael is the Bonsai Consultant for the Portland Japanese Garden.
- Teaches classes to international students at his garden Crataegus Bonsai.
- Blogs weekly at crataegus.com
- Michael's expertise on native species and unique approach to bonsai composition added a valuable perspective to our November program. We appreciate his dedication to the art and his contributions to the bonsai community.

Looking ahead, we're thrilled about the upcoming BSOP Holiday Party. For those who have RSVP'd, get ready for the largest and best BSOP auction of the year. The agenda is packed, featuring delicious appetizers and the joy of sharing treats. While we won't have an ugly sweater contest this year, feel free to don your festive attire – ugly sweaters are always welcome!

Let's also take a moment to revisit the incredible guests we've had in 2023:

- Daisaku Nomoto
- Bill Valvanis
- Dan Robinson
- Jonas Dupuich
- Young Choe
- Todd Schlafer
- Scott Elser
- Andrew Robson
- And, of course, Michael Hagedorn

Throughout the year, these talented professionals shared their knowledge on a variety of topics and species. It's been a whirlwind of inspiration, learning, and growth for our club.

In closing, a heartfelt thank you to all our members. Your passion and dedication make BSOP one of the finest bonsai organizations in the country. Looking to 2024 and beyond, let's continue our journey, cultivating the art of bonsai and fostering a supportive community.

Wishing you a joyful holiday season and a bonsai-filled new year!

Best regards, *Benjamin MacBeth*, vp-programs@portlandbonsai.org

Library Hours

Reminder: The BSOP library will not be open at the Holiday Party on December 16th. All materials checked out at the November 28 meeting are not due until the January 23rd meeting.

Jan Hettich

Library Inventory Help Needed

DECEMBER 28, 10:00AM at the Milwaukie Center.

Every year we perform a physical inventory of the BSOP library collection. We need 6-8 volunteers to help with checking the library items against the computer files. It involves moving books and magazines from the shelves, scanning them, and replacing them.

Inventory takes 2 to 4 hours, but any help is appreciated.

Please contact Michael Babbit at MIKEXC@MSN.COM to let me know you're interested and for details.

Michael Babbit

MENTORSHIP NEWS

Mentorship 102 Drop-In Lab is a winner. In November, we had 28 members present and in December, 26. They were a fun, friendly and enthusiastic group. My thanks go out to the mentors who spent their Sunday afternoon with us. Roger Case, Lee Cheatle, Brandon McMullin, Brandon Mylen, Keith Wingfield, Jeffrey Robson and John Eads gave us much appreciated advice to further the development of our personal trees.

As you may know, Mentorship 102 Lab is open to all members of BSOP. The lab is held at the Milwaukie Community Center in the Oregon Grape Room from 1:30 – 3:30 once a month on a Sunday. Our next meeting will be on January 7th. Check the BSOP website calendar for a complete schedule for 2024. There is no registration for the lab. Drop-ins should bring their own tools, trees and any materials that might be needed. Please enter thru the back door to the room which is located beyond the main entrance of the building. Bring only one tree into the lab at a time. You are welcome to bring more than one tree to the lab, but leave the extras in your car or on the sidewalk outside the room.

Mentorship 101 Basic Bonsai Class is filled, with three more spots available to those members who would like to be on the waiting list. Those on the waiting list are eligible to substitute for any absences by the students and to receive the student curriculum package so that should you be asked to substitute, you will be up to date on past class work. Those on the wait list and drop-ins are to be silent observers. The classes are held in the Oregon Grape Room at the Center once a month for six months starting in January. The hours are 9:00 to 1:00 on the same day as the M102 Lab.

After experiencing the success of the M102 lab, with all its noise and camaraderie, I am even more excited to get started on the M101 classes.

Here is wishing you a wonderful winter holiday and the best start of a new year.

Joanne Raiton, Mentorship Chair, joanneraiton@msn.com

BSOP November Program

Michael Hagedorn presents a twofer

Michael brought examples of planting bonsai without a traditional pot. He spoke about various materials suitable for slabs. After the break, he discussed using our native species as bonsai. Also, he spoke to a record number of BSOP members. Biggest monthly meeting ever.



Slab planting



Raising bonsai to a new level



The record crowd

Photos courtesy of Jim Baggett



Tokonoma display tree



Michael's Juniper on a curved slab



Members helped Myrna celebrate her 80th birthday.

Suiseki

Suiseki are divided into 3 broad categories. Landscape Stones (Sansui-seki); Figure Stones (Sugata-ishi) & Patten Stones (Monyo-ishi). I won't bore you with the details of each however.

The figure stones can represent boats, huts, bridges, animals, people, religious icons etc. It

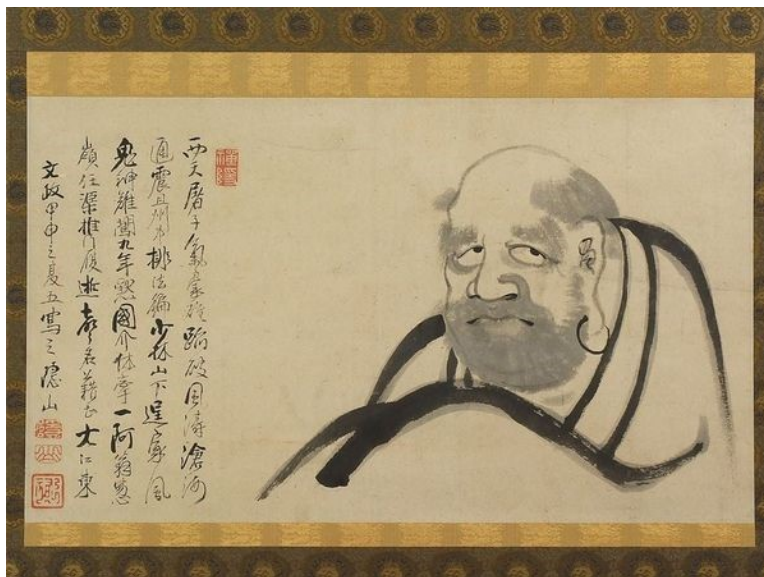


is important that these stones not be worked or altered in order to give them such shapes, and the ideal sugata-ishi is completely natural. The pictured stone is one such example. The daiza was made for us by a club member and the suiseki stands just about 10 inches tall.

To us it is a perfect representation of the sitting figure Daruma, the Japanese name for Bodhi-dharma, the semi-legendary Indian monk credited with founding Ch'an Buddhism in China, which is known as Zen in Japan. Thought to be a Hindu or Persian prince, Daruma rejected his former life and travelled across the Silk Road from Central Asia to Northern China. In 520, he settled in China where he meditated for nine years facing a cave wall before achieving enlightenment. Stories of Daruma's nine-year meditation emphasize both his suffering and his steadfastness.

Andrew found this stone about 6 years ago in the Sandy River here in Oregon. . It has been sitting outside here in Portland, Oregon as we attempt to cultivate a fine patina and goes through the aging process known as 'yoseki'. We are raising the patina naturally as it sits in the weather to

carefully develop the 'sabi' aesthetic so prized in good suiseki. This stone exhibits all five characteristics desired in suiseki.



Viewing suiseki is a very personal experience and based on an individual's memory and inexperienced it is not unusual to see something different than the next viewer. What do you see in this viewing stone? Let me know the next time you see me. Also did you notice the BSOP Face-book page now has a suiseki chat associated with it? Check it out.

Jeffrey



Crataegus.com
deciduous
portfolio



Plum grove plus one crab apple.

Haiku

December cold prompts
Deciduous dormancy
Living more subtly

PRE-BONSAI PLANTS · BONSAI TOOLS

High-fired Pots • Mica & Plastic Training Pots
Wire • Organic Fertilizers
Mazama Pumice (1/16-3/8")
Diatomite Rock from Nevada, USA
Superior Black Compost • Red Cinder Rock (1/4-5/16")

Est. 1978



25321 NE 72nd Avenue
Battle Ground, WA 98604
Phone (360) 687-5641
D Burnett

Need supplies?
Call ahead for delivery
at BSOP meetings.



I'm protective of trees. In a Secret Service kind of way.

Jose Rivas champions the trees, landscapes and property investments of the customers in his care. And he's one of the many reasons we've become the premier scientific tree and shrub care company in the world.

503-722-7267 | bartlett.com/portland-or

JOSE RIVAS, Arborist and Bartlett Champion



**BARTLETT
TREE EXPERTS**
SCIENTIFIC TREE CARE SINCE 1917

LTE #063
The F.A. Bartlett Tree Expert Company

EVERY TREE NEEDS A CHAMPION.

Portland Bonsai Supply



Order Online

Local Pickup, Delivery & Shipping
Order Delivery at BSOP meetings

**Joshua Roth & Ryuga Tools
Authorized Dealer**

Soils— Wire—Tools— Pots
Supplies— Fertilizer



portlandbonsaisupply.com



9240 SE Philips Place, Happy Valley, OR 97086

The Bonsai Society of Portland meets on the fourth Tuesday of each month.

The Milwaukie Center

5440 SE Kellogg Creek Drive, Milwaukie OR 97222

Enter parking lot from Rusk Road

Visitors are always welcome!

Board of Directors

President: Andrew Robson

2nd VP-Membership: Patrice Morrow

Secretary: Jeffrey Robson

1st VP-Programs: Ben MacBeth

Treasurer: Brandon McMullin

Past President: Joe Johanesen

Committee Chairs

Ambassadors: Rivka McCormack

Auctions: Dane Burrell, Toni Martin

Audio/Visual: Reid Parham

Facilities Coordinator: Brandon McMullin

Fall Show: Lee Cheatle

Formal Display: Scott Elser

Heritage: Steve Leaming

Hospitality:

Library: Jan Hettick, Michael Babbit

Mentorship: Joanne Raiton

Newsletter: Peter Pelofske

Portland Nursery Show Reid Parham

Photographer: Jim Baggett

Raffle:

Social Media: Scott Tice

Spring Show:

Summer Picnic:

Vendor Coordinator:

Volunteer Coordinator:

Webmaster: Karl Holmes

Contact information is on the BSOP website www.portlandbonsai.org under Services/Members Only/Membership Directory